

ORGANIZATION CHART OF DEPARTMENT OF ANIMAL HUSBANDRY

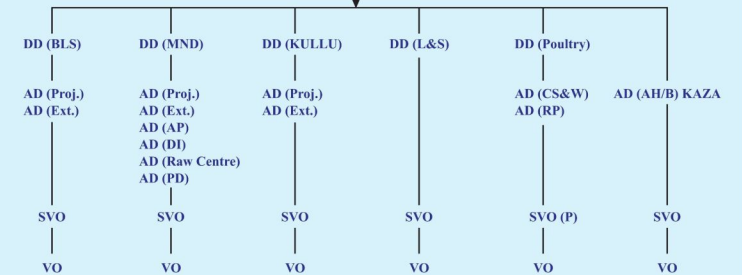
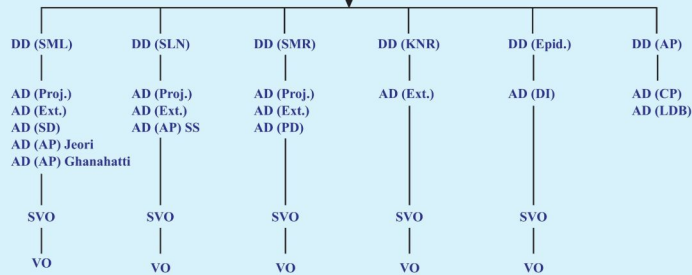
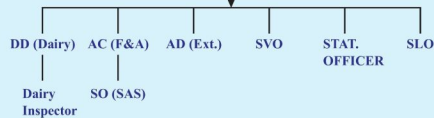
SECRETARY

DIRECTOR

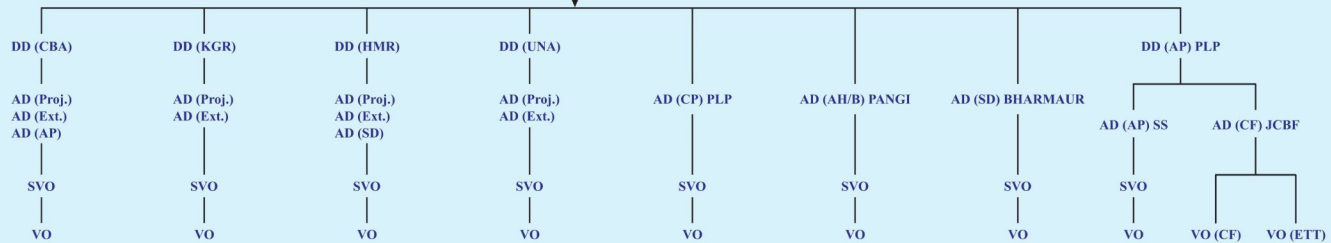
Joint Director (Headquarters)

Joint Director (SLBP)

Joint Director (S&W)



Joint Director (AH) Palampur



ABBREVIATIONS

- DD — Deputy Director
- AD — Asstt. Director
- EPID. — Epidemiology
- AP — Animal Production
- STAT — Statistics
- DI — Disease Investigation
- S&W — Sheep and Wool
- RP — Rinderpest
- CP — Cattle Production
- EXT. — Extension
- PROJ. — Project
- SD — Sheep Development
- CF — Cattle Farm
- PD — Poultry Development
- SVO — Senior Veterinary Officer
- VO — Veterinary Officer
- SS — Sperm Station
- AH/B — Animal Health/Breeding
- ETT — Embryo Transfer Technology
- LDB — Livestock Development Board
- SLO — Senior Law Officer
- AC (F&A) — Asstt. Controller (Finance & Accounts)
- SO — Section Officer
- SAS — Subordinate Accounts Services
- P — Poultry